

Managing production and distribution  
logistics from end to end.

---

**Process management with Softproviding Core:  
SAP intelligence for customer-specific applications.**

Think ahead. Go there.

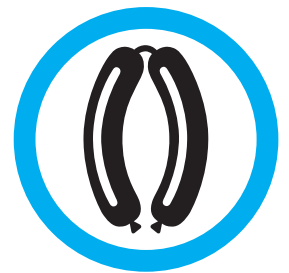
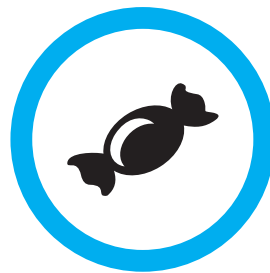
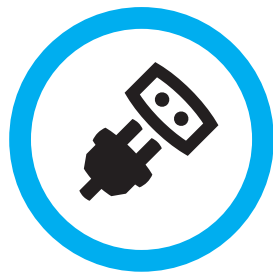
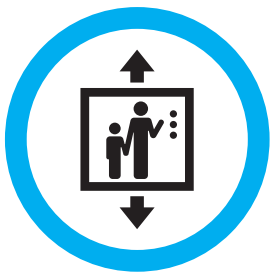
# Softproviding Core. Ensuring everything runs smoothly from purchase to dispatch.

Softproviding Core provides companies involved in industrial production with an innovative SAP-based solution, which can be individually customized to suit industry-specific requirements. Softproviding Core has proved itself in a multitude of applications in the food industry and is increasingly gaining ground in other sectors of industrial production.

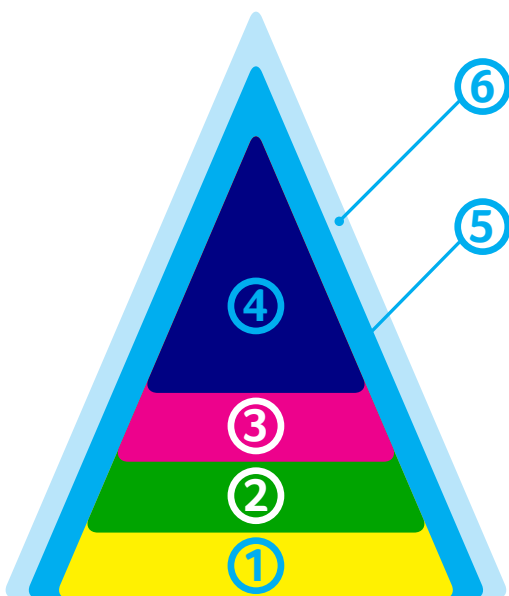
The highly adaptable solution covers the entire supply chain: from the procurement of raw and semifinished products to the various steps in production and processing, right through to delivery to trade partners or end customers. It is also possible to include functions that meet industry-specific requirements and conditions.

## Determination capabilities and system intelligence

The range of Softproviding Core services begins with object determination. The system supports the development and implementation of storage strategies, for example, storage by trade categories. Its intelligence is also evident in determination applications. It is thus able to use access sequences to identify relevant information for specific processes, such as the creation of individual label layouts or compliance with specific packaging regulations.



Softproviding Core is fully integrated  
into SAP Standard.



## Process data acquisition and processing with no compromises

One characteristic feature of Softproviding Core is its flexible, end-to-end process data acquisition, which can use any type of technical component, such as printers, scanners or scales. A key element of this solution is the Remote Application Framework (RAF). This plays an important role in managing and controlling goods in warehouse logistics and picking, in production, on the basis of customer specifications, and in packing and dispatch. The Data Process System (DPS) enables any process data in the SAP application to be selected, planned and reproduced.

### 6 SAP Meat and Fish Management by msg since 2000

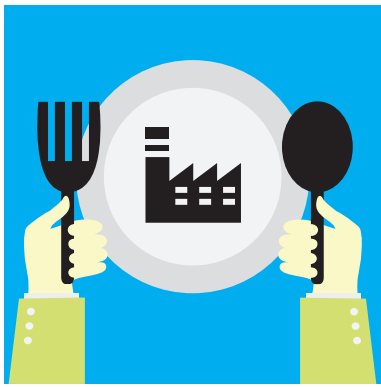
5 Softproviding Core

4 Softproviding Meat

3 Softproviding Link

2 SAP ERP (functional layer)

1 SAP NetWeaver (technical layer)



### **Softproviding Core**

Across industries

Supports planning, production process, picking, packaging, labeling, including data acquisition and mobile computing

---

### **All operating systems up and running**

The Remote Application Framework (RAF) enables the development of mobile or touchscreen applications directly in SAP (ABAP), regardless of the device. The apps required for the device-specific adaption of smartphones, tablets, industry PCs, etc. are provided by Softproviding. The overall advantage of the RAF is that it can easily be deployed anywhere where data needs to be recorded.

### **A taste for industry-specific challenges**

As well as providing the basic functions, Softproviding Core also meets specific industry requirements. For example, functions that are important in the food industry, but which can also be used by companies in other sectors of industry. These include, for example, automated weighing, optimization of load carrier configurations or the manual or automated combination of different orders.

Softproviding Core is an integrated component of the industry solution SAP Meat Management by msg for the protein industry.

*“With Softproviding Core, we finally have a real-time overview of process status and stocks throughout the entire supply chain.”*

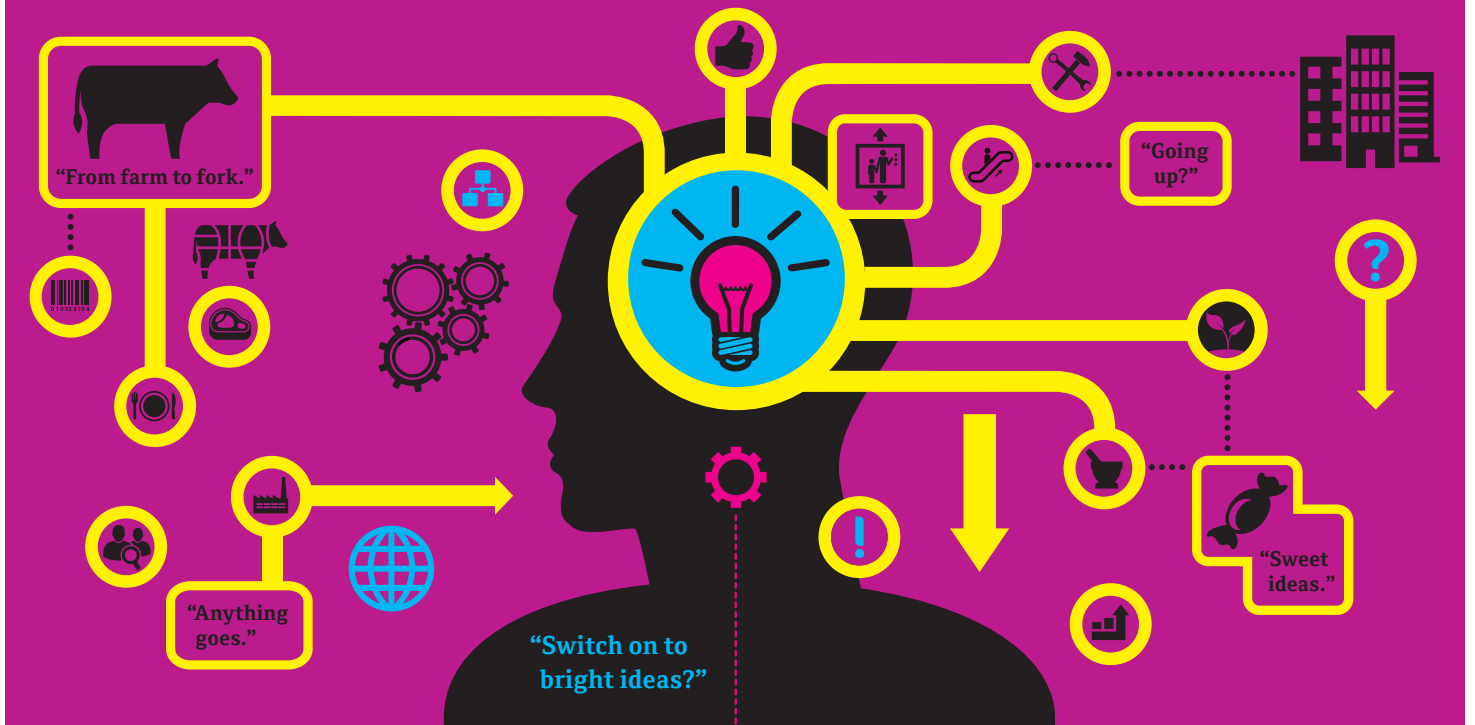
### **Direct connection of parallel systems**

Peripheral devices, such as printers, scanners, scales and PLCs, communicate with Softproviding Core via the Device Gateway System (DGS). The DGS also provides touchscreen applications for Softproviding Core and Softproviding Meat.

### **A company that sets standards in the meat industry can manage any type of process**

Softproviding is one of the few software providers with whom SAP has entered into a partnership agreement for software development: as of September 2016, SAP Meat Management by msg features on the SAP price list and is being distributed globally via SAP Sales. The Meat Management solution was included in SAP's official product portfolio as a SAP Vendor Branded Reseller (VBR) product.

**The industry solution SAP Meat Management by msg as a VBR component: a first-class reference which goes far beyond the protein industry.**



Great ideas are always simple – Softproviding simply makes them happen.

Softproviding AG, with its head office in Basel, Switzerland and part of the globally positioned msg group, is a software and IT consultancy company with an international focus. The company was established in 2000 with the idea of developing a comprehensive industry solution for the protein industry based on SAP. Since then, we have become the world's leading provider in this sector. In 2005, we were able to extend our expertise into other sectors. Today, our customers range from manufacturers of herbal lozenges to high-tech elevators.

Our business has grown in line with our customers' requirements. In the process, we have developed an in-depth understanding of business processes and solutions. Our aim is to help our customers progress and make them more successful. We see IT technologies as a means to an end. They only make sense if they contribute to the success of your business. We are there for you when you need us. We provide first-class services, such as automatic updates and round-the-clock support, as well as ideas and suggestions for the development of your projects and visions.

*Softproviding Core for the process and food industry is the result of a pioneering spirit and innovation, and is testimony to an ability to systematically implement industry-specific requirements.*

Concept, Text, Design: [www.culture-art-com.ch](http://www.culture-art-com.ch)

Softproviding AG  
Dornacherstrasse 210  
CH-4053 Basel  
Switzerland  
Phone +41 (0)61 508 21 21  
[sp.info@softproviding.com](mailto:sp.info@softproviding.com)  
[www.softproviding.com](http://www.softproviding.com)

SAP + Softproviding + You = Leading the field